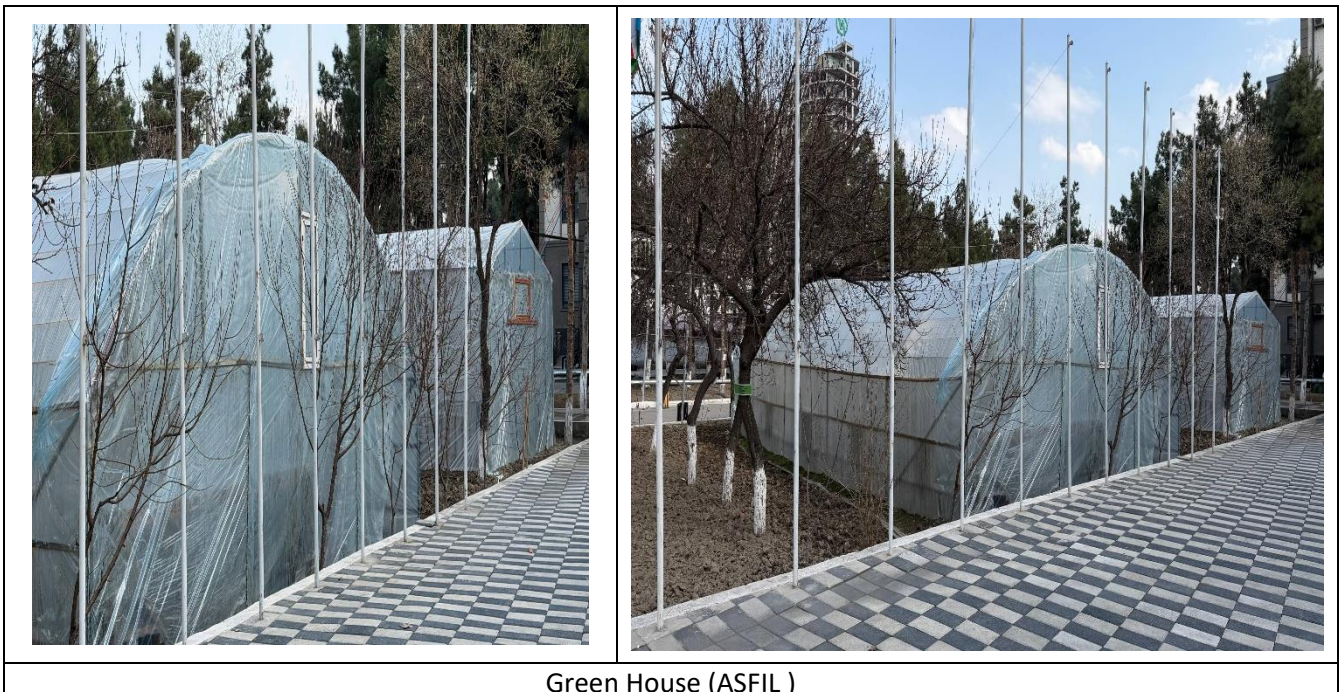


## Template for Evidence(s) UI GreenMetric Questionnaire

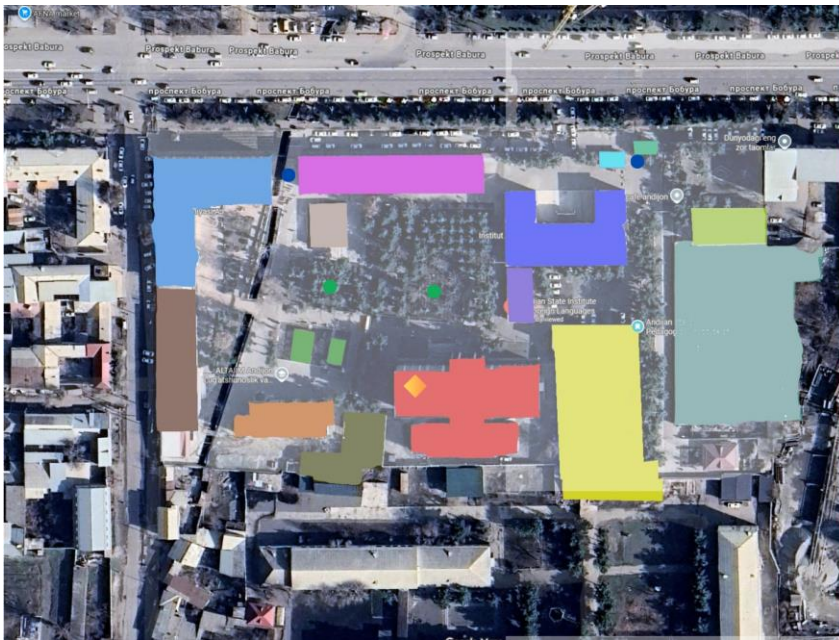
University : Andijan State Institute of Foreign languages  
Country : Uzbekistan  
Web Address : [www.adchti.uz](http://www.adchti.uz)

### [1] Setting and Infrastructure (SI)

[1.18] Conservation: plant (flora), animal (fauna), or wildlife, genetic resources for food and agriculture secured in either medium or long-term conservation facilities (SI.10)







- Administrative building
- Faculty of English language and literature
- Faculty of English philology, teaching methodology and translation studies
- Storage Room
- Center for Lexicography
- Boiler Room
- Faculty of Romano-Germanic and Slavic languages
- Sport complex
- Swimming Pool and Wrestling Hall
- Library
- Access Control Point
- Tourism laboratory
- Shelter
- Greenhouse

Information

- Security post

Health facilities

- ◆ Medical point

Conservation facilities

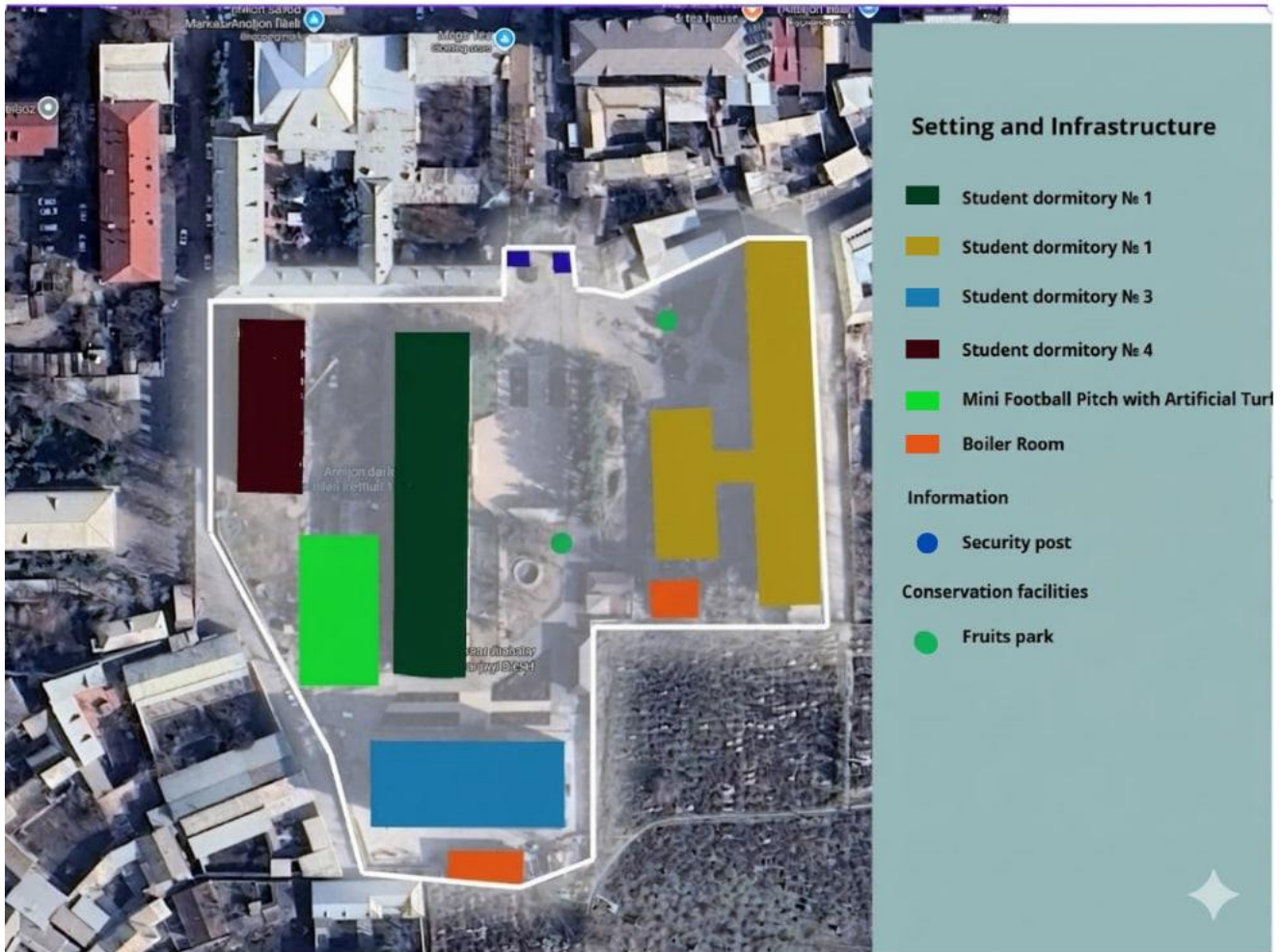
- Fruits park

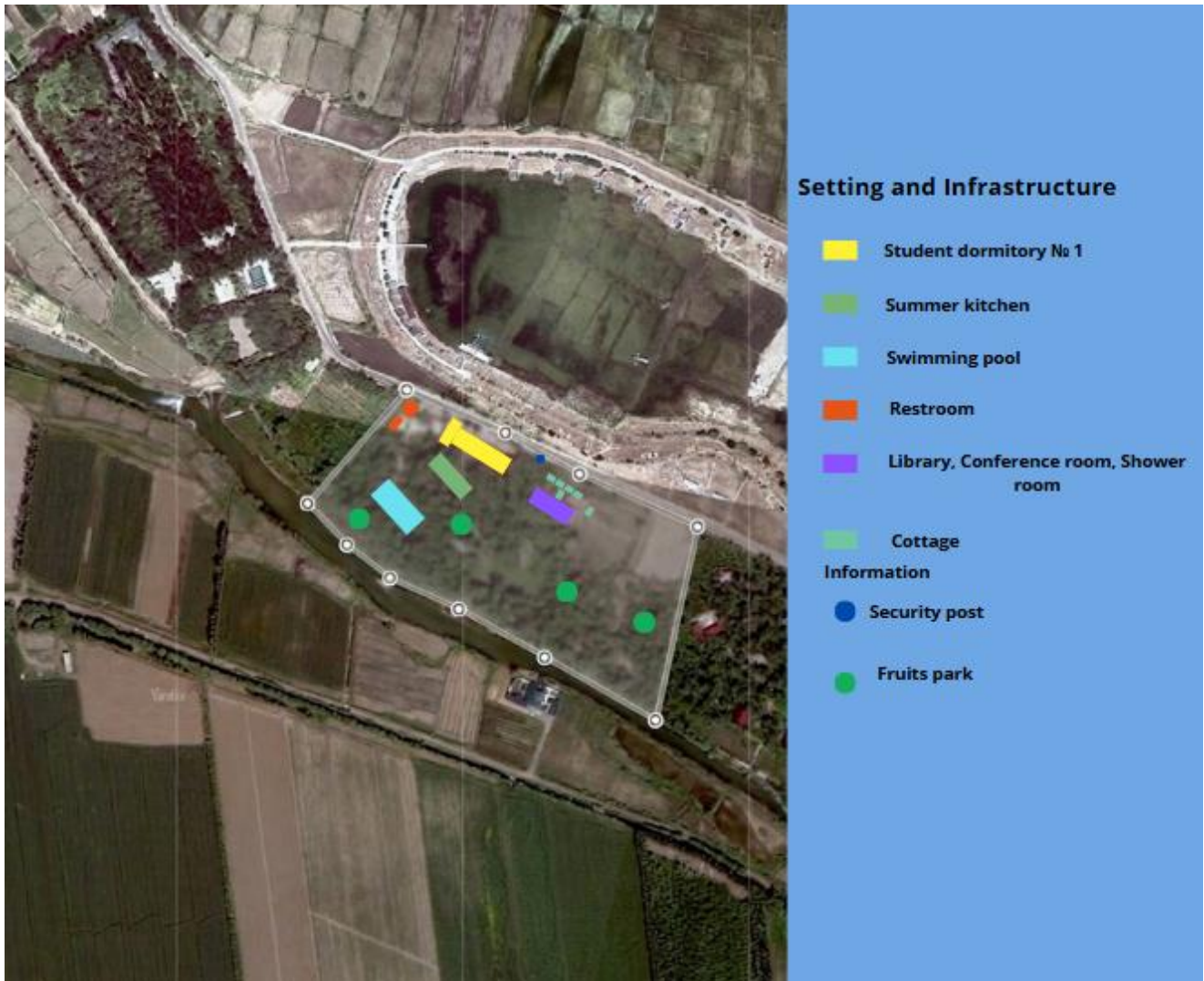
**ANDIJAN STATE INSTITUTE OF FOREIGN LANGUAGES (ASIFL) - VEGETABLE COLLECTION**  
**Poliz Ekinlari Turlari (Vegetable Varieties)**

Cherry Tomato	Tomato Roma	Tomato Beefsteak	Heirloom Heirloom
Slicing - Cucumber	Cucumber, Pickling	Persian Cucumber	English Cucumber
Bell Bell Pepper	Red Bell Pepper	Fell Bell Pepper	Orange Pepper
Jalapeno Pepper	Habanero Pepper	Serrano Pepper	Cayenne Pepper
Sweet Basil	Purple Basil	Thai Basil	Holy Basil

**ANDIJAN STATE INSTITUTE OF FOREIGN LANGUAGES (ASIFL) - FRUIT TREE COLLECTION**  
**Mevali Daraxt Turlari (Fruit Tree Varieties)**

Fuji Apple	Granny Smith	Gala	Honeycrisp
Bartlett Pear	Bosc	Anjou	Oriental Persimmon
Yellow Peach	White	Nectarine	Clingstone
Apricot	Apricot	Morello Cherry	Morello
Whole Almonds	Almonds	English Walnut	Common Fig





**Description:**

The campus is systematically organized with clearly defined zones for academic, residential, recreational, and service functions. Key infrastructure includes administrative and academic buildings, student dormitories, libraries, sports complexes, and essential support facilities such as boiler rooms, storage areas, and security posts. The presence of access control points and safety infrastructure ensures a secure and well-managed campus environment, contributing to sustainable and inclusive institutional operations.

A significant component of the campus design is the integration of green and conservation areas. The campus includes fruit parks, landscaped open spaces, and designated agricultural zones that enhance biodiversity and ecological balance. These green areas serve multiple purposes, including environmental protection, aesthetic improvement, and educational use, supporting long-term sustainability objectives.

The institute actively promotes sustainable agriculture through the establishment of greenhouse facilities and open-field cultivation areas. These facilities support the production of



diverse crops, including vegetables (tomatoes, cucumbers, peppers, herbs) and fruits (apples, pears, peaches, cherries, and others). The use of controlled environments, structured planting systems, and efficient irrigation practices ensures optimal resource utilization, reduces environmental impact, and enables year-round agricultural productivity.

In addition, the documented diversity of plant species reflects the institution's commitment to conserving genetic resources and promoting food sustainability. These agricultural and green infrastructure elements function as living laboratories, providing students with practical learning opportunities and supporting research in environmental sustainability, agriculture, and resource management.

Overall, the campus demonstrates a holistic and sustainable model of development that aligns with multiple SDGs, including:

- SDG 2 (Zero Hunger): through sustainable food production and agricultural education
- SDG 3 (Good Health and Well-being): by providing a safe, healthy, and green campus environment
- SDG 4 (Quality Education): via experiential learning and research opportunities
- SDG 11 (Sustainable Cities and Communities): through efficient land use and integrated infrastructure
- SDG 12 (Responsible Consumption and Production): by implementing resource-efficient agricultural practices
- SDG 13 (Climate Action): through environmentally responsible campus planning
- SDG 15 (Life on Land): by preserving biodiversity and green spaces

**Additional evidence link (i.e., for videos, more images, or other files that are not included in this file): <https://green-institute.adchti.uz/>**

**<https://green-institute.adchti.uz/#setting>**